



# Clark County Seasonal Flu Activity Report MMWR Week 12 Mar 9, 2025 – Mar 15, 2025

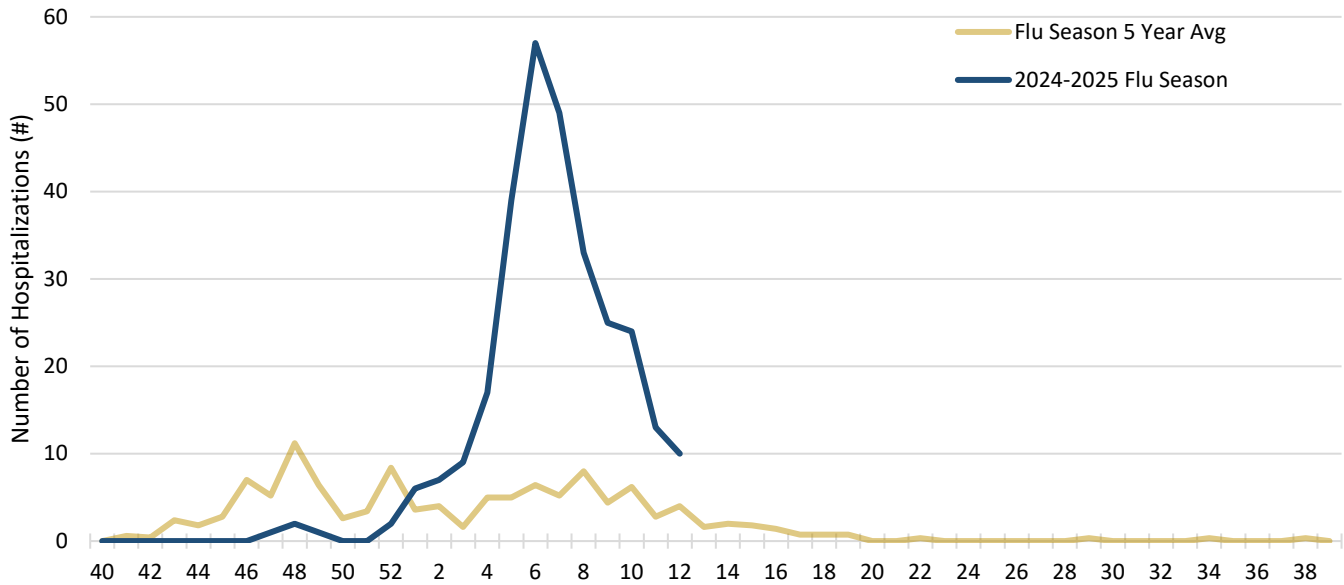


## Clark County Influenza-Associated Hospitalizations and ED Visits Report

2024 MMWR Week 40 ended on October 5<sup>th</sup>. Week 40 is considered the beginning of “flu season.”

### Weekly Influenza-associated hospitalizations

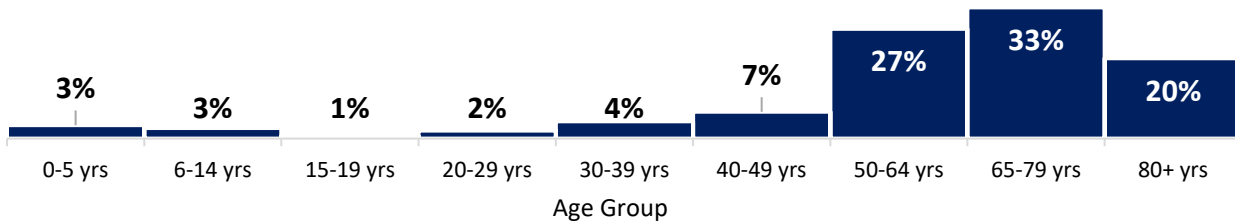
Count of hospitalizations each week in Clark County, 2024-2025 flu season



**Figure 1:** Influenza-associated Hospitalizations in Clark County, OH; 2024-2025 flu season compared to 5-year average. Data queried from Ohio Disease Reporting System (ODRS) Data Extract on 3/28/2025. These are preliminary numbers and may change based on updated ODRS data.

### Influenza-Associated Hospitalizations by Age Group

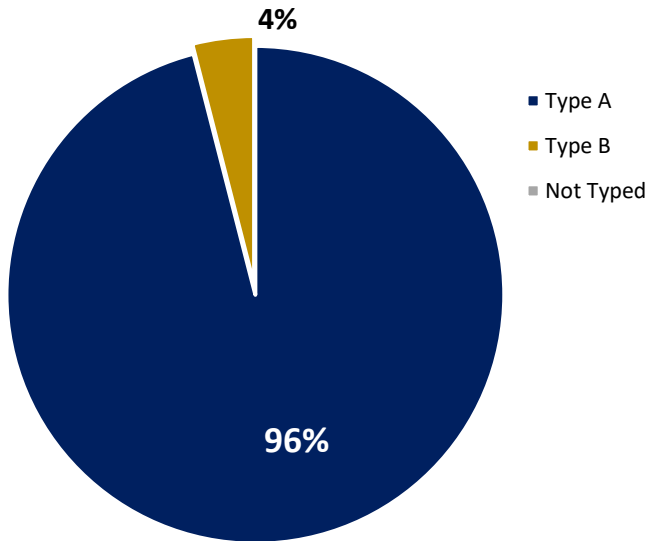
Percentage of hospitalizations in each age group in Clark County, 2024-2025 Flu Season



**Figure 2:** Confirmed Influenza-Associated Hospitalizations in Clark County, by age group. MMWR Weeks 40 – 12 (9/29/2024 –3/22/2025). Data queried from ODRS Data extract on 3/28/2025.

### Influenza-Associated Hospitalizations by Flu Type

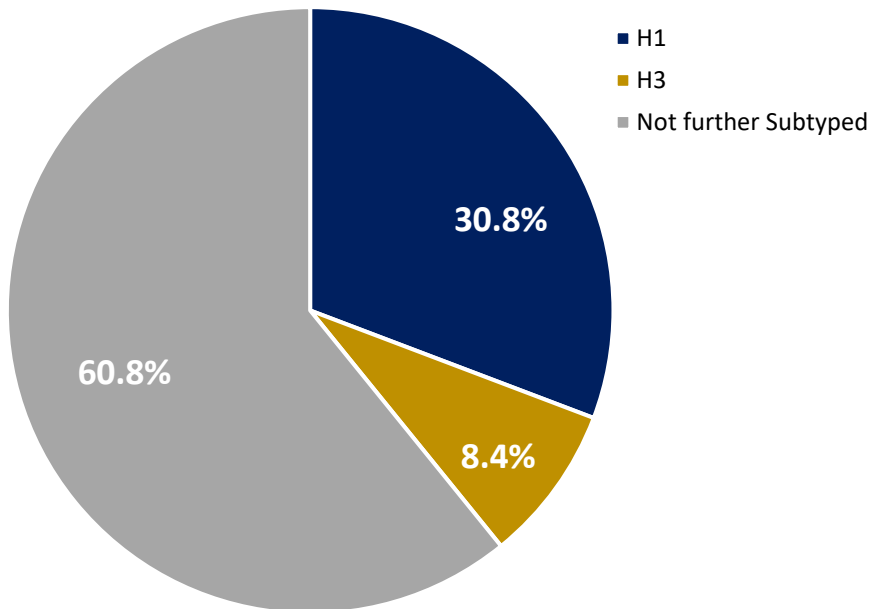
Percentage of hospitalized influenza cases  
Clark County, 2024-2025 Flu Season



**Figure 3:** Confirmed Influenza-Associated Hospitalizations in Clark County, by flu type. MMWR Weeks 40 – 12 (9/29/2024 – 3/22/2025). Data queried from ODRS Data extract on 3/28/2025.

### Influenza A Subtypes in 2024-2025 Flu Season

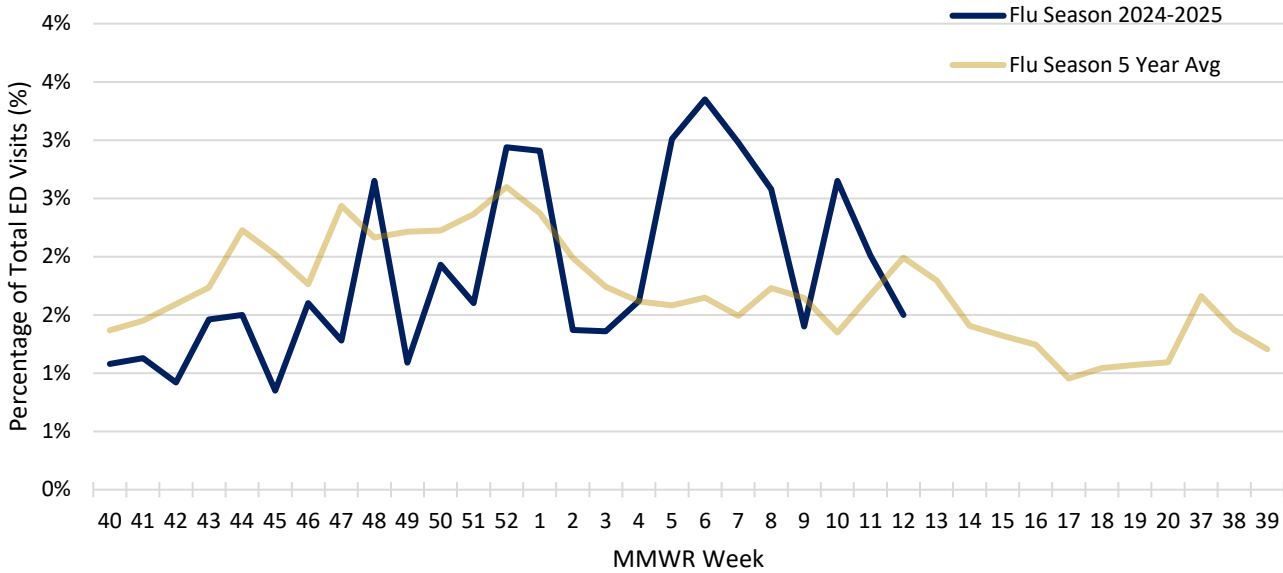
Percentage of hospitalized influenza A cases, Clark County



**Figure 4:** Confirmed Influenza-Associated Hospitalizations in Clark County, by Flu Type A Subtypes. MMWR Week 40 – 12 (9/29/2024 – 3/22/2025). Data queried from ODRS Data extract on 3/28/2025.

### Fever and ILI ED Visits

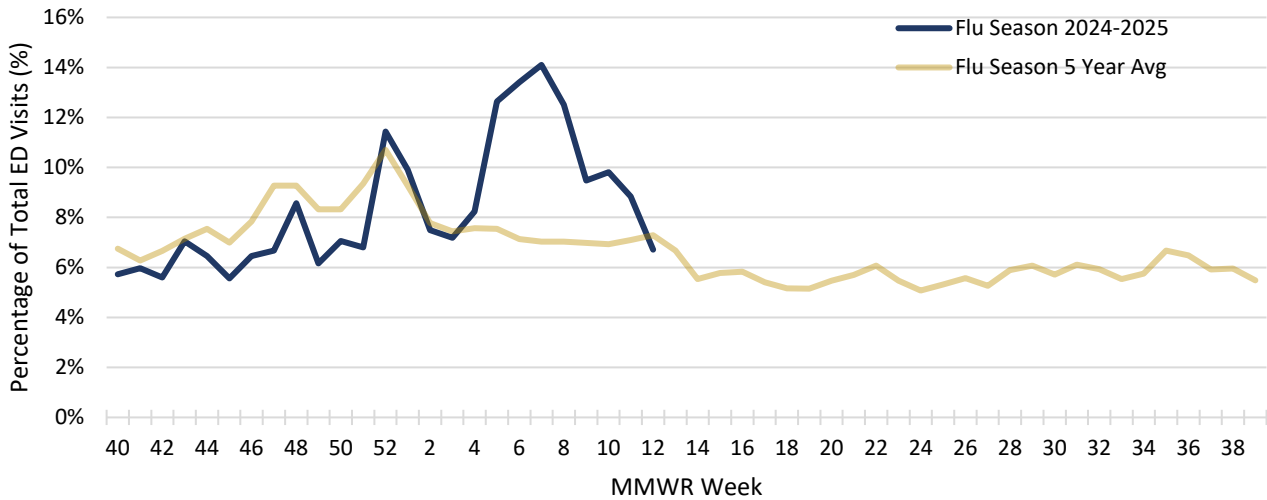
Percentage of weekly ED visits in Clark County, 2024-2025 Flu Season



**Figure 5:** Percentage Fever and Influenza-Like-Illness (ILI) Specified ED Visits in Clark County, OH, compared to 5-year average. Data queried from EpiCenter Syndromic Surveillance System on 3/28/2025.

### Constitutional ED Visits

Percentage of weekly ED visits in Clark County, 2024-2025 Flu Season



**Figure 6:** Percentage Constitutional ED Visits in Clark County, OH, compared to 5-year average. Data queried from EpiCenter Syndromic Surveillance System on 3/28/2025.

Clark County Flu Reports: <https://ccchd.com/nursing-health-education/infectious-disease/>

All data are preliminary and may change as more confirmed cases are reported to the Ohio Disease Reporting System (ODRS) and the U.S. Centers for Disease Control and Prevention.

### Regional Influenza Report: MMWR Week 12 (Mar 16<sup>th</sup> – Mar 22<sup>nd</sup>)

West Central Ohio Flu Reports: <https://www.phdmc.org/report/montgomery-county-flu-activity-level>

### State Influenza Report: MMWR Week 12 (Mar 16<sup>th</sup> – Mar 22<sup>nd</sup>)

Ohio Flu Reports: <https://odh.ohio.gov/know-our-programs/seasonal-influenza/influenza-dashboard/influenza-dashboard>

### National Influenza Summary: MMWR Week 12 (Mar 16<sup>th</sup> – Mar 22<sup>nd</sup>)

This week, 13 jurisdictions experienced moderate activity, and 7 jurisdictions experienced high or very high activity. Ohio was a state that reported moderate activity.

National Influenza Surveillance Report: <https://www.cdc.gov/fluview/index.html>

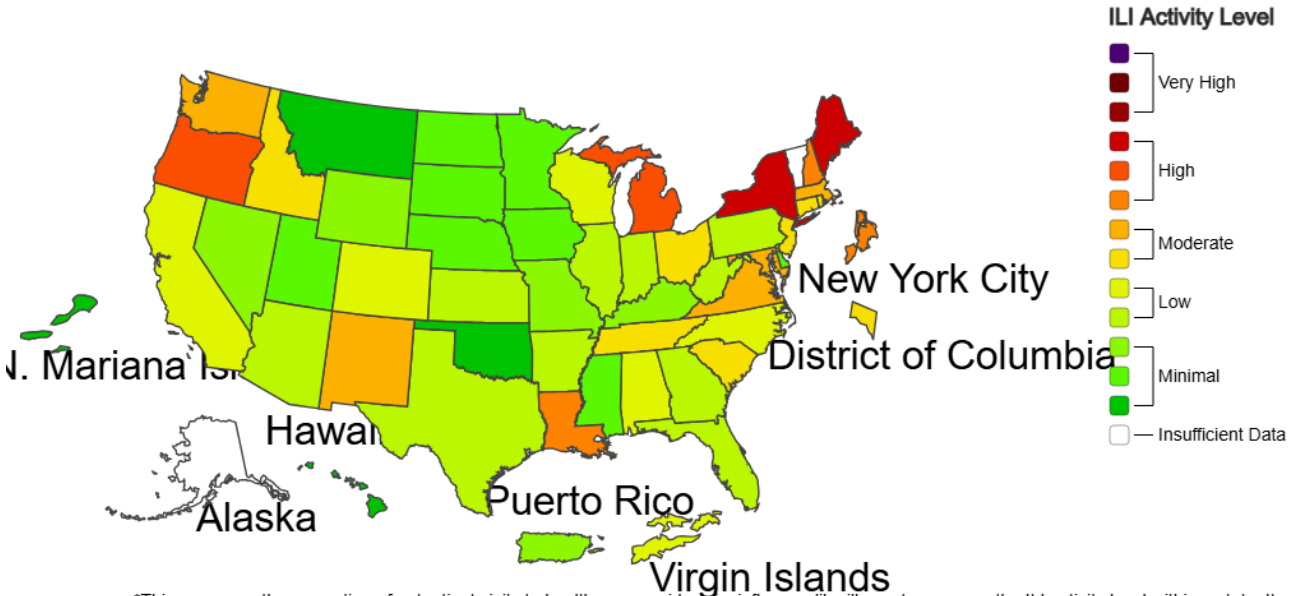


## A Weekly Influenza Surveillance Report Prepared by the Influenza Division

### Outpatient Respiratory Illness Activity Map Determined by Data Reported to ILINet

This system monitors visits for respiratory illness that includes fever plus a cough or sore throat, also referred to as ILI, not laboratory confirmed influenza and may capture patient visits due to other respiratory pathogens that cause similar symptoms.

2024-25 Influenza Season Week 12 ending Mar 22, 2025



\*This map uses the proportion of outpatient visits to healthcare providers for influenza-like illness to measure the ILI activity level within a state. It does not, however, measure the extent of geographic spread of flu within a state. Therefore, outbreaks occurring in a single city could cause the state to display high activity levels.

\*Data collected in ILINet may disproportionately represent certain populations within a state, and therefore may not accurately depict the full picture of influenza activity for the whole state.

\*Data displayed in this map are based on data collected in ILINet, whereas the State and Territorial flu activity map are based on reports from state and territorial epidemiologists. The data presented in this map is preliminary and may change as more data is received.

\*Differences in the data presented by CDC and state health departments likely represent differing levels of data completeness with data presented by the state likely being the more complete.

\*For the data download you can use Activity Level for the number and Activity Level Label for the text description.

\*This graphic notice means that you are leaving an HHS Web site.

For more information, please see CDC's Exit Notification and Disclaimer policy.

For more information on the methodology, please visit Outpatient Illness Surveillance methods section.